



**MONTHLY REPORT
TOMATO
(SEPTEMBER, 2019)**



**Horticulture Statistics Division
Department of Agriculture, Cooperation & Farmers Welfare
Ministry of Agriculture & Farmers Welfare
Government of India
New Delhi**

1. PRODUCTION

- The major Tomato producing states in the country are Andhra Pradesh, Madhya Pradesh, Karnataka, Gujarat, Odisha, West Bengal, Chhattisgarh, Bihar, Telangana, Tamil Nadu, Uttar Pradesh, Maharashtra, Haryana and Himachal Pradesh. These states account for about 90% of the total production of the country.
- The production of Tomato during the year 2018-19 (Third Advance Estimate) is estimated to be about **1.84% lower** as compared to the previous year. (**Table-1.2**)
- Details regarding seasonality and harvesting period of Tomato crop in the country are given in **Table-1.1**.

Table-1.1: TOMATO TRANSPLANTING AND HARVESTING PERIOD

Region	Transplanting	Harvesting Period
Southern & Western States	A-June- July	A- August - September
	B-October - November	B- December - February
	C-January- February	C-March - June
Northern & Eastern States	A- October- November	A- January - March
	B- January - February	B- March - June
Hilly States	A- May- June	A- July - September
	B-October - November	B-December - March

Table-1.2: STATE WISE TOMATO PRODUCTION IN THE COUNTRY**(Production in '000 Tonnes)**

STATE/Uts	Five year Average (2013-14 to 2017-18)		2017-18		2018-19 (3 rd A.E.)	
	Production	% Share	Production	% Share	Production	% Share
ANDHRA PRADESH	2857.98	15.15	2744.32	13.89	3146.96	16.22
MADHYA PRADESH	2307.82	12.23	2419.28	12.24	2511.89	12.95
KARNATAKA	2029.47	10.76	2081.59	10.53	1775.79	9.16
GUJARAT	1321.30	7.00	1357.52	6.87	1366.57	7.05
ODISHA	1335.03	7.08	1312.07	6.64	1305.31	6.73
WEST BENGAL	1198.76	6.35	1265.25	6.40	1268.12	6.54
CHHATTISGARH	952.29	5.05	1087.33	5.50	1133.09	5.84
BIHAR	1012.07	5.36	941.56	4.77	955.57	4.93
TELANGANA	1146.26	6.08	1171.50	5.93	901.53	4.65
TAMIL NADU	564.53	2.99	887.08	4.49	845.91	4.36
UTTAR PRADESH	646.83	3.43	841.61	4.26	844.01	4.35
MAHARASHTRA	1030.04	5.46	1086.56	5.50	805.90	4.15
HARYANA	673.31	3.57	753.72	3.81	650.63	3.35
HIMACHAL PRADESH	457.05	2.42	481.94	2.44	502.42	2.59
ASSAM	412.25	2.18	396.24	2.01	417.86	2.15
JHARKHAND	246.46	1.31	265.26	1.34	270.00	1.39
PUNJAB	196.56	1.04	224.26	1.13	231.45	1.19
UTTARAKHAND	104.03	0.55	103.85	0.53	103.93	0.54
RAJASTHAN	83.90	0.44	88.73	0.45	90.00	0.46
JAMMU & KASHMIR	81.95	0.43	52.96	0.27	79.95	0.41
TRIPURA	50.13	0.27	56.50	0.29	57.88	0.30
MANIPUR	37.10	0.20	33.72	0.17	35.09	0.18
MEGHALAYA	41.49	0.22	35.51	0.18	34.91	0.18
NAGALAND	20.95	0.11	22.47	0.11	19.69	0.10
MIZORAM	10.66	0.06	11.87	0.06	12.23	0.06
SIKKIM	6.90	0.04	8.03	0.04	8.11	0.04
KERALA	20.78	0.11	12.61	0.06	4.82	0.02
ARUNCHAL PRADESH	7.02	0.04	2.15	0.01	2.15	0.01
OTHERS	15.36	0.08	13.84	0.07	14.94	0.08
TOTAL	18868.28	100.00	19759.32	100.00	19396.71	100.00

Source: State Departments of Horticulture & Agriculture

2. CURRENT STATUS

- The major Kharif growing states are Chhattisgarh, Gujarat, Haryana, Telangana, Andhra Pradesh, Karnataka and Madhya Pradesh. As per information received from the states till 27th September 2019, area covered under Kharif is **0.97** lakh hectares as against of corresponding period of last year **1.23** lakh hectares. The final report is yet to be received from the states.
- Harvesting of Kharif Tomato is continuing in Andhra Pradesh, Tamil Nadu, Maharashtra and Karnataka.
- Quality of Tomato coming in market is medium to good.

3. MONTHLY ARRIVAL

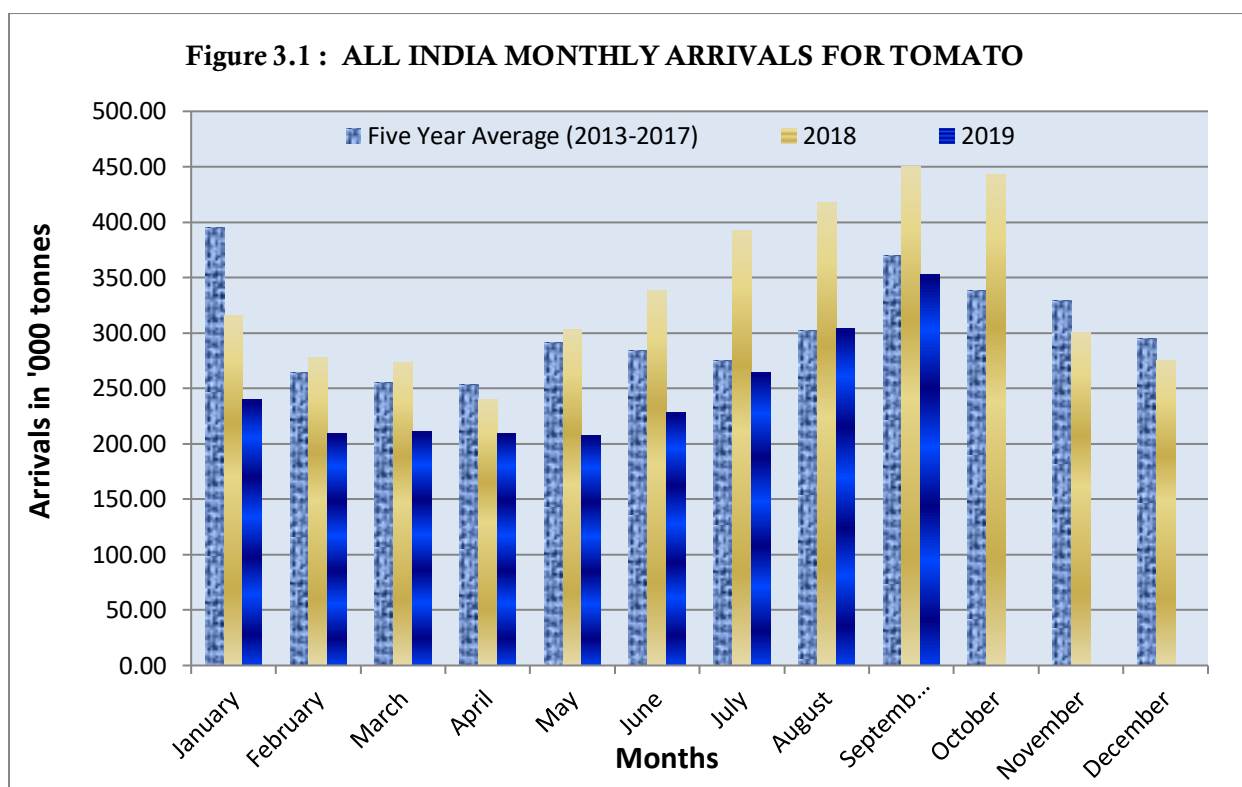
- The All India monthly arrivals of Tomato for five years (2013-2017) along with the monthly arrival of 2018 and 2019 (up to September) are given in **Table-3.1 and Figure-3.1**.
- The arrivals in September, 2019 was higher than August, 2019 but lower from corresponding month of last year and than average of five years (2013-2017).

Table-3.1: ALL INDIA MONTHLY ARRIVALS OF TOMATO

Month		Arrivals in '000 Tonnes	
		2018	2019
	Five Year Average (2013-2017)		
January	394.95	315.69	239.64
February	264.66	277.57	209.14
March	255.60	273.20	211.00
April	253.59	239.62	209.76
May	291.65	303.30	207.82
June	284.07	338.44	228.46
July	275.44	392.71	264.78
August	301.92	417.35	303.74
September	369.56	450.24	352.35
October	338.53	443.29	
November	329.75	300.57	
December	294.74	275.37	

Source: AGMARKNET

Note: Data of arrivals for Tamil Nadu and Bihar are not available



The above graph depicts comparative arrivals of monthly average of five years (from 2013 to 2017), January to December and for the year 2018 and January to September for the year 2019.

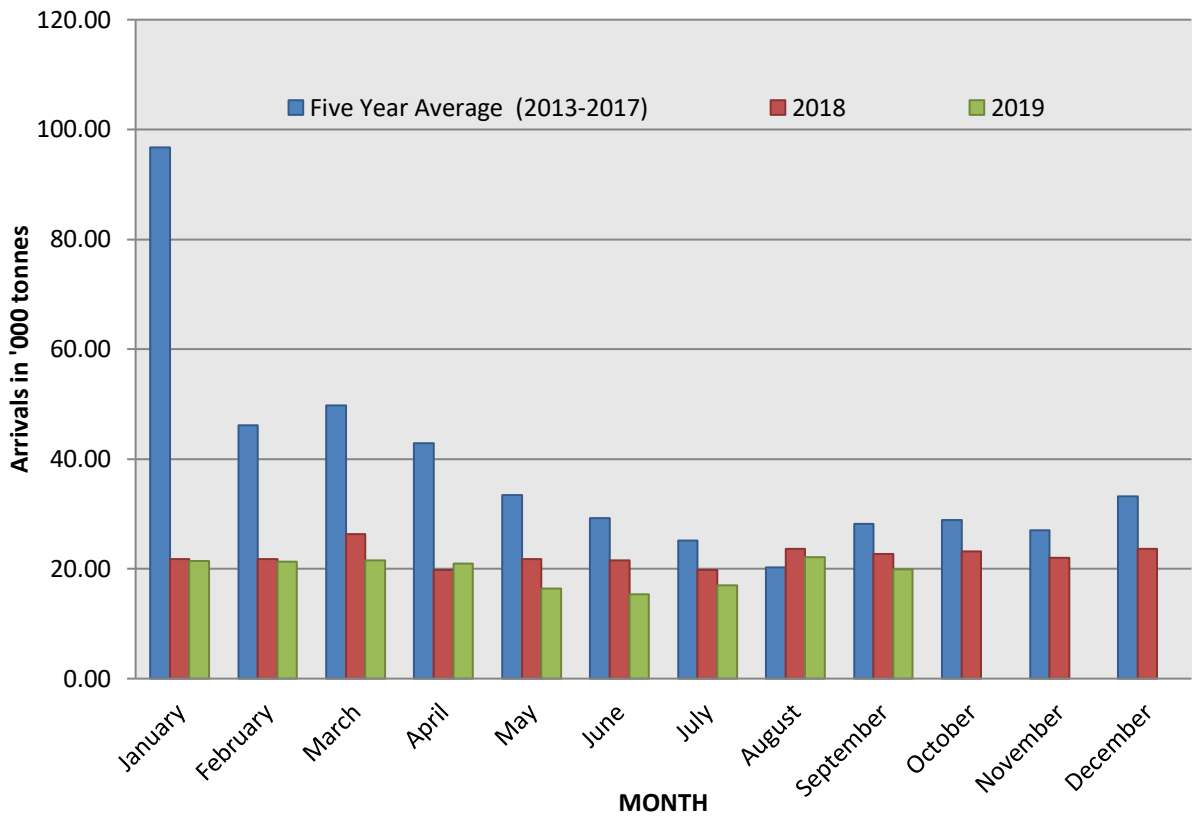
Table-3.2: MONTHLY ARRIVALS OF DELHI

Arrivals in '000 Tonnes

Month	Market Arrivals of Delhi		
	Five Year Average (2013-2017)	2018	2019
January	96.79	21.79	21.37
February	46.13	21.80	21.28
March	49.77	26.28	21.58
April	42.87	19.82	20.98
May	33.44	21.73	16.38
June	29.20	21.57	15.30
July	25.13	19.76	17.03
August	20.19	23.61	22.06
September	28.20	22.66	19.88
October	28.83	23.17	
November	27.05	22.03	
December	33.19	23.68	

Source: AGMARKNET

Figure 3.2 : MONTHLY ARRIVALS OF TOMATO IN DELHI



4. WHOLESALE PRICES

Table-4.1: STATE WISE MARKET ARRIVAL AND AVERAGE WHOLESALE PRICES

States	September, 2019		August, 2019		September, 2018	
	Market Arrivals (in '000 MT)	Wholesale Prices (Rs/Qtl.)	Market Arrivals (in '000 MT)	Wholesale Prices (Rs/Qtl.)	Market Arrivals (in '000 MT)	Wholesale Prices (Rs/Qtl.)
Maharashtra	97.56	1482.03	47.11	1549.89	174.12	587.82
Karnataka	60.69	1034.47	82.02	1225.09	60.30	571.41
Uttar Pradesh	37.18	1661.30	32.21	2251.21	40.14	1356.75
Gujarat	23.41	1823.51	23.31	2467.63	27.71	794.73
NCT of Delhi	19.88	1658.25	22.06	2087.24	22.66	1032.45
Andhra Pradesh	17.85	817.69	14.56	1283.08	20.60	501.63
Rajasthan	12.49	1626.53	8.35	2374.50	17.55	1210.82
Odisha	10.60	2367.21	8.67	3251.15	4.82	1995.41
Chhattisgarh	9.38	1456.11	10.33	2072.81	11.35	1152.00
Haryana	9.35	1824.46	7.97	2375.26	14.38	1291.12
Telangana	8.95	990.56	12.69	1598.63	11.21	652.73
Jammu and Kashmir	7.82	2046.47	0.23	2817.53	2.53	1344.09
Madhya Pradesh	7.51	995.25	6.83	1466.37	6.65	725.74
Himachal Pradesh	6.94	2153.38	7.83	1723.55	3.43	1166.75
Punjab	5.95	1687.11	4.18	2018.40	15.95	995.81
West Bengal	5.79	2982.61	4.13	3743.61	5.20	2233.92
Kerala	5.44	1648.20	4.45	2394.16	4.19	1512.07
Uttarakhand	2.86	1108.84	4.82	1302.45	2.90	942.75
Chandigarh	1.24	1754.43	1.13	2023.89	2.10	1099.70
Assam	0.96	2609.69	0.29	3667.85	1.41	2109.96
Meghalaya	0.30	3377.97	0.28	3921.74	0.33	2099.05
Nagaland	0.13	5028.86	0.19	4703.32	0.50	4378.13
Tripura	0.07	4221.35	0.05	4903.59	0.08	2768.07
Mizoram	0.03	7208.88	0.04	8027.37	0.01	4880.24
Jharkhand	0.00	0.00	0.00	0.00	0.13	2311.33
All India Total	352.35	2142.61	303.74	2610.01	450.24	1588.58

Source: AGMARKNET

Table-4.2: MONTHLY AVERAGE WHOLESALE PRICES OF TOMATO IN DELHI
(Prices in Rs/Quintal)

Month	2015	2016	2017	2018	2019
January	1443.6	1433.9	562.0	914.5	1072.74
February	1486.8	1093.1	715.2	704.5	1141.52
March	1401.8	838.3	905.8	642.5	1570.3
April	1278.7	675.3	775.9	600.0	1273.2
May	1405.7	733.6	541.7	342.1	1569.9
June	1172.9	1853.0	1192.1	633.3	1310.0
July	1611.9	2491.6	4049.7	1829.5	2423.2
August	1375.3	1403.3	3707.2	1381.2	2087.2
September	1679.6	1496.8	1931.5	1032.5	1658.2
October	1699.5	1306.5	2462.1	1176.2	
November	2161.9	848.6	3390.8	1115.2	
December	1621.7	590.5	1506.2	931.8	

Source: AGMARKNET

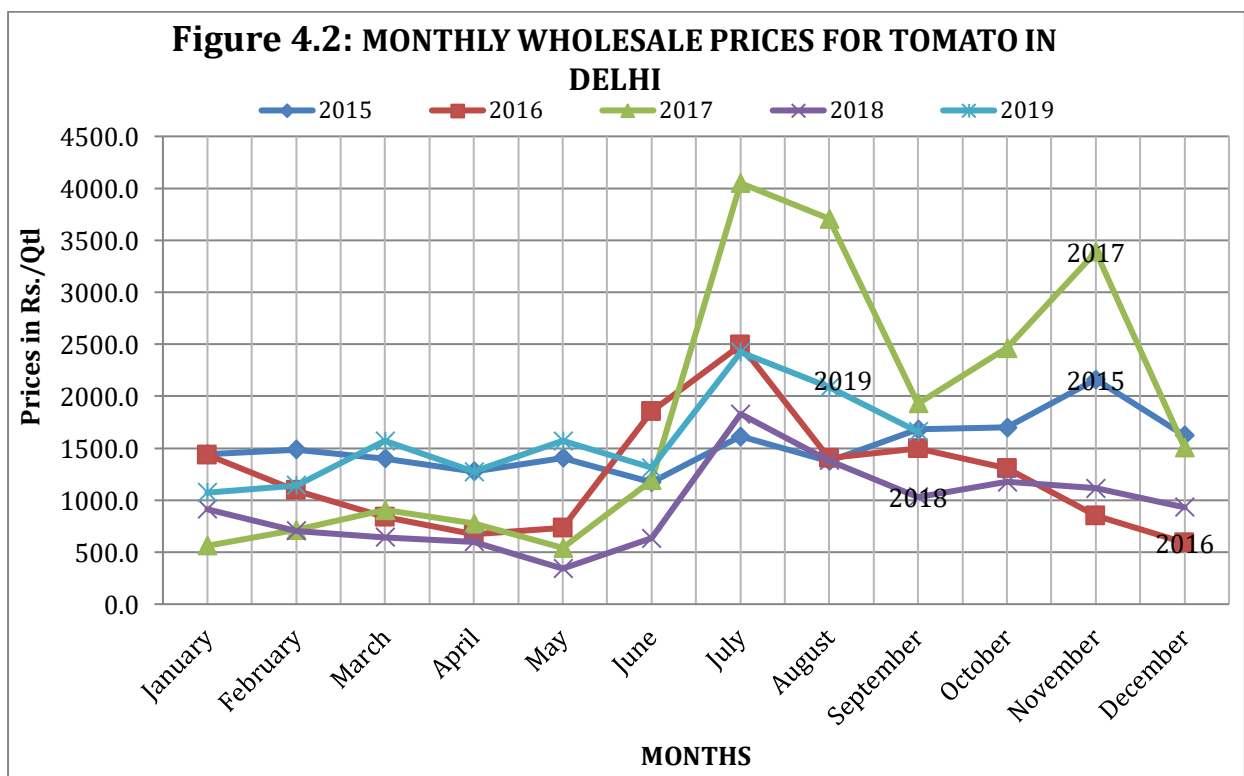


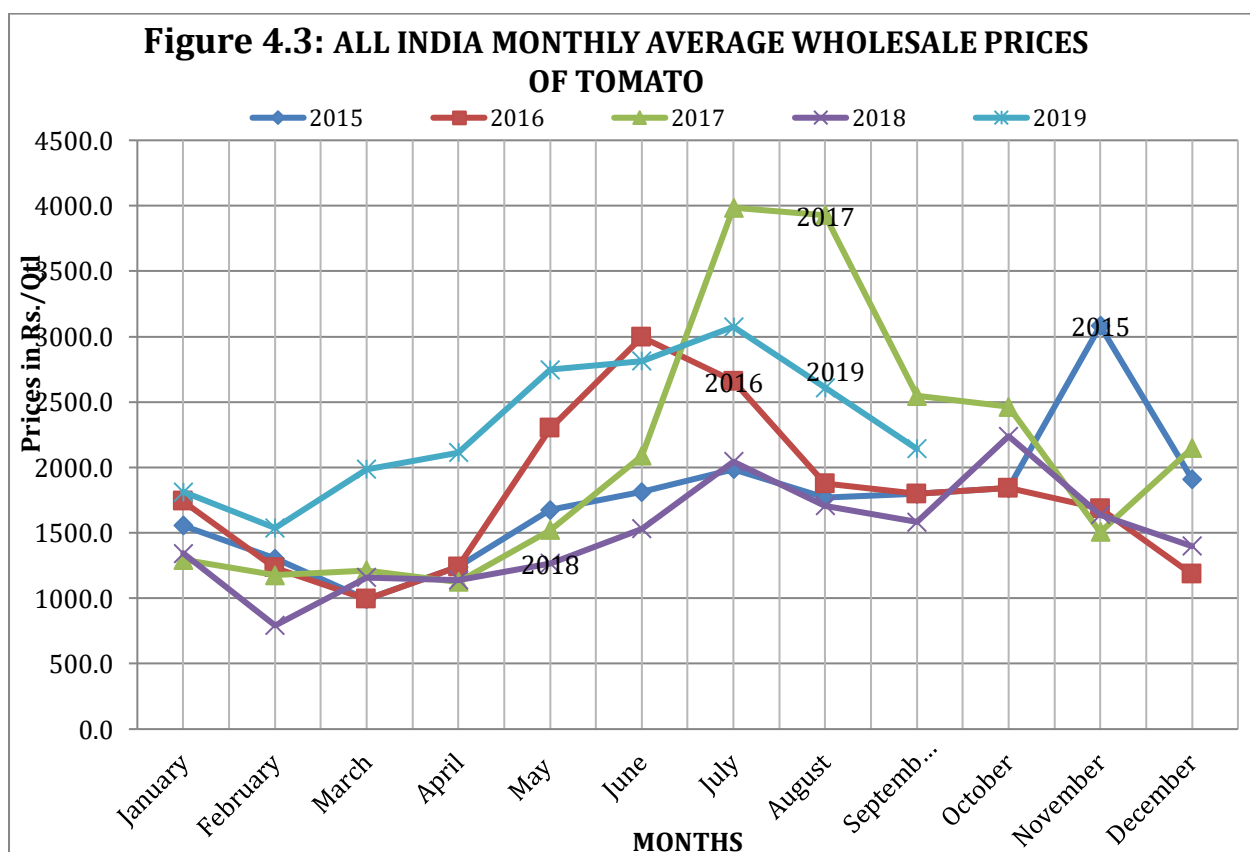
Table-4.3: ALL INDIA MONTHLY AVERAGE WHOLESALE PRICES OF TOMATO

(Prices in Rs./Quintal)

Month	2015	2016	2017	2018	2019
January	1555.5	1742.0	1294.4	1343.7	1811.8
February	1302.7	1231.5	1177.4	791.8	1537.0
March	992.4	992.4	1213.1	1160.0	1986.3
April	1239.9	1239.9	1123.9	1140.5	2112.1
May	1676.6	2298.6	1520.1	1266.1	2747.4
June	1812.6	2995.3	2089.6	1531.0	2812.9
July	1987.2	2658.4	3984.7	2044.5	3074.9
August	1768.2	1876.0	3927.6	1706.8	2610.0
September	1797.4	1797.4	2546.2	1582.1	2142.6
October	1841.7	1841.7	2462.1	2238.7	
November	3081.5	1685.8	1507.6	1639.5	
December	1909.7	1182.8	2147.8	1399.2	

Source: AGMARKNET

Note: Data of prices for Tamil Nadu and Bihar are not available



5. EXPORT

Table-5.1: MONTHLY EXPORT OF TOMATO

Month/Year	Export			
	2018		2019	
	Value in Rs. Crore	Qty in Tonnes	Value in Rs. Crore	Qty in Tonnes
January	5.32	3041.86	7.89	3095
February	3.73	2329.87	4.45	1723
March	4.25	2450.90	3.52	2593
April	3.83	2747.18	2.61	2026
May	4.11	2863.42	3.07	1764
June	6.18	2797.88	4.39	2216
July	17.16	6134.31	16.18	6273
August	23.99	8972.58		
September	40.82	15922.21		
October	76.20	24163.27		
November	57.21	22834.86		
December	16.38	5953.97		
Total	259.18	100212.31	42.11	19690

Source: DGCI&S
